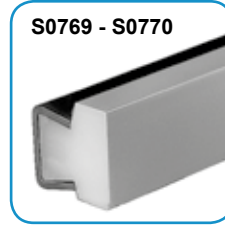
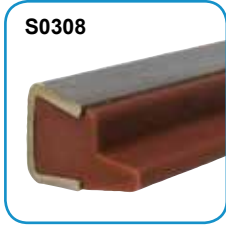


Guide - Rail Clamps for

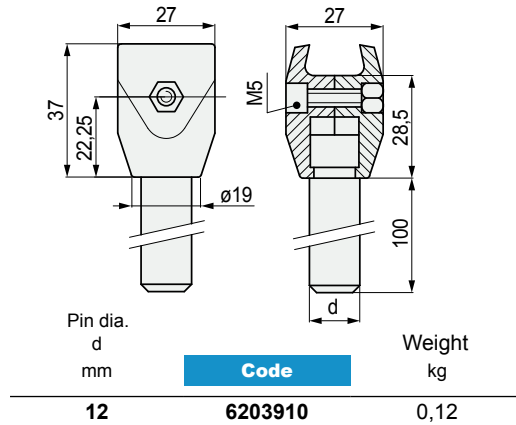
- Part. S0223
- Part. S0317
- Part. S0219
- Part. S0273
- Part. S0308
- Part. S0715
- Part. S0765
- Part. S0767
- Part. S0768
- Part. S0769
- Part. S0770



Part. S0210P



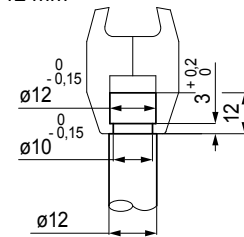
Guide rail clamp



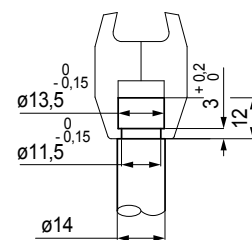
- Material: guide rail clamps in reinforced polyamide PA FV (black). Pin in austenitic stainless steel. Bolt in austenitic stainless steel. Nut in nickel plated brass.
- Packaging: 24 pieces.

Pin dimensions for Part. S0210

Pin dia. 12 mm

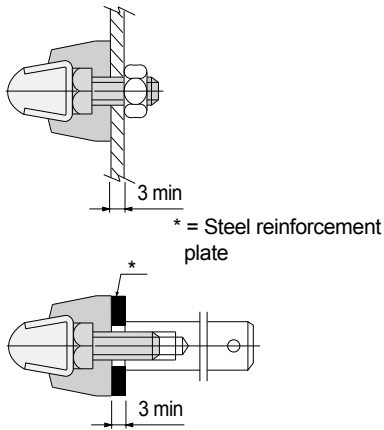


Pin dia. 14 mm

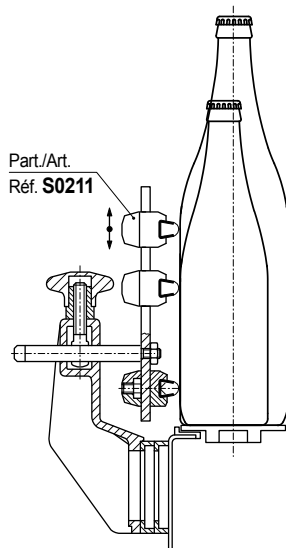


for Part. S0223 - S0317 - S0219 - S0273 - S0308 - S0715 - S0765 - S0767 - S0768 - S0769 - S0770

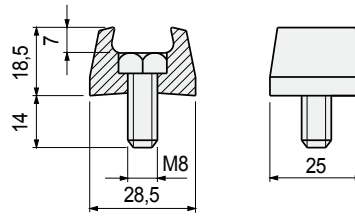
• Assembly of Part. S0275



• Assembly of Part. S0211
Unlimited height adjustment possible



■ Guide rail clamp



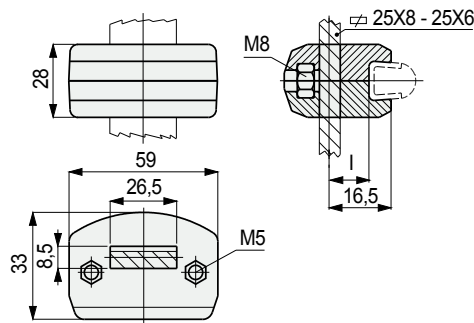
Part. **S0275**



| Code | Weight kg |
|-------|--------------|
| 66811 | 0,02 |

- Material: guide rail clamps in acetal POM (Black), bolt in austenitic stainless steel.
- Packaging: 50 pieces.

■ Adjustable guide rail clamp



Part. **S0211**



Distance l = 8 mm

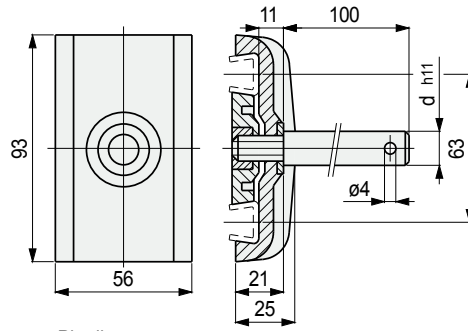
| l mm | Code | kg |
|---------|-------|------|
| 8 | 59961 | 0,05 |

- Material: guide rail clamps in reinforced polyamide PA FV (black).
- Bolt in austenitic stainless steel. Nut in nickel plated brass.
- Packaging: 24 pieces.

for Part. S0223 - S0317 - S0219 - S0273 - S0308 - S0715 - S0765 - S0767 - S0768 - S0769 - S0770

Part. S0213

Double guide rail clamp



Pin dia.
d
mm

Weight
kg

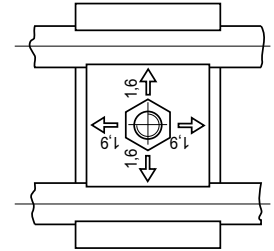
| Pin dia. d mm | Code | Weight kg |
|---------------------|-------|--------------|
| 12 | 60091 | 0,19 |

- Material: guide rail clamp in reinforced polyamide PA FV (black).
Pin in austenitic stainless steel.
Washer in austenitic stainless steel.
Nut in nickel plated brass.
- Packaging: 24 pieces.

• Assembly of Part. S0213

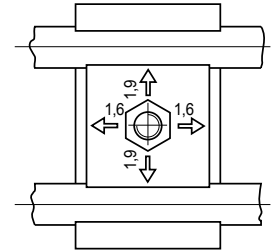
The plate inside the clamp must be positioned to suit the thickness of the guide.

Position of plate for assembly of guides of thickness $s = 1,5$.



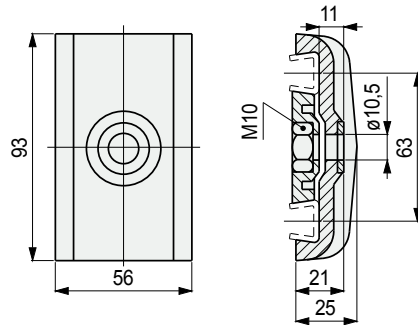
Position of plate for assembly of guides of thickness $s = 2$.

The plate is turned through 90°.



Part. S0213

Double guide rail clamp



Weight
kg

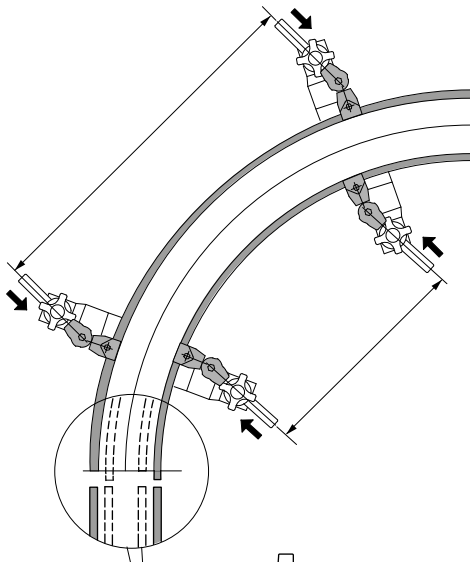
| Code | Weight kg |
|-------|--------------|
| 60101 | 0,08 |

- Material: guide rail clamp in reinforced polyamide PA FV (black).
Washer in austenitic stainless steel.
Nut in nickel plated brass.
- Packaging: 24 pieces.
- Accessories: swivel pin connection Part. S0749 - S0740P.

for Part. S0219 - S0273

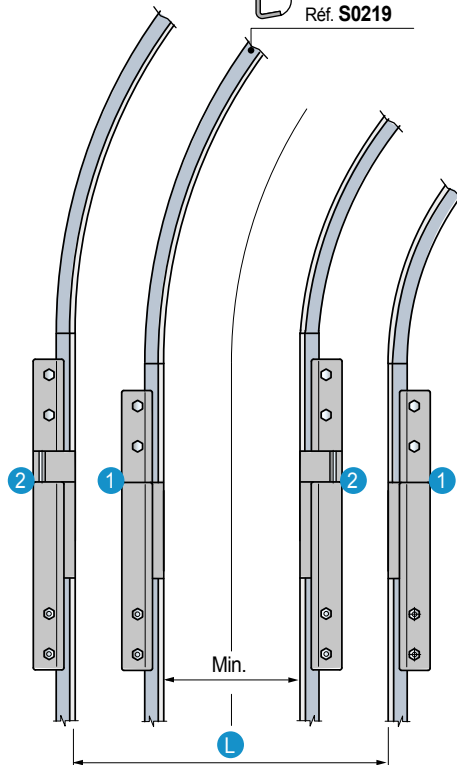
• **Assembly of Part. S0736**

The clamps allows the junction of straight tracks with corner tracks.
Ideal to adjust the length of side guides near the curves when width adjustment is needed.



Part./Art.
Réf. **S0273**

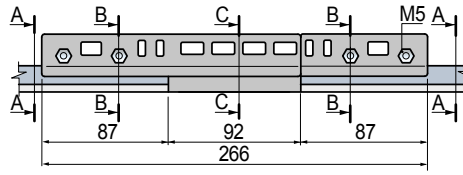
Part./Art.
Réf. **S0219**



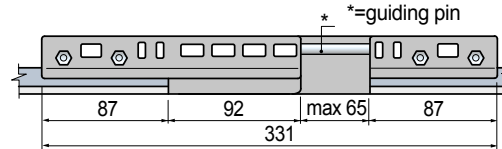
- 1 - Closed clamp.
- 2 - Open clamp.
- L - Size changing width.

■ **Sliding joint clamp**

Clamp fully closed



Clamp fully open

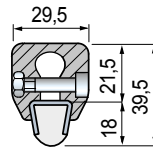


■ **Part. S0736 - Sliding joint clamp for Part. S0219**

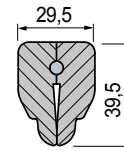
Part./Art.
Réf. **S0219-
S0219XLF**



Sez./Sec.
SeK. A-A



Sez./Sec.
SeK. B-B



Sez./Sec.
SeK. C-C

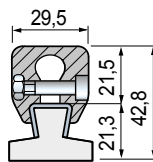


■ **Part. S0737 - Sliding joint clamp for Part. S0273**

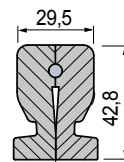
Part./Art.
Réf. **S0273**



Sez./Sec.
SeK. A-A



Sez./Sec.
SeK. B-B



Sez./Sec.
SeK. C-C

| Type of guides to joint | Code | Weight kg |
|-------------------------|--------------------|--------------|
| Part. S0219 - S0219XLF | S0736695402 | 0,24 |
| Part. S0273 | S0737695412 | |

- Material: clamp in acetal (white).
- Guiding pin in austenitic stainless steel.
- Tightening bolt in austenitic stainless steel.
- Max recommended tightening torque: 0,4 Kgm.
- Packaging: 1 piece.

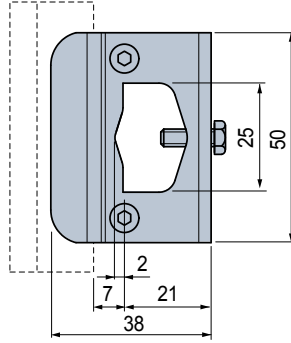
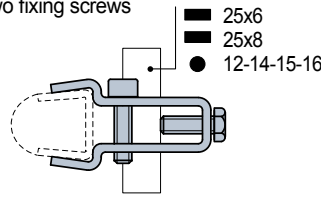
for Part. S0223 - S0317 - S0219 - S0273 - S0308 - S0715 - S0765 - S0767 - S0768 - S0769 - S0770

Part. S0694

Guide-rail clamp



With two fixing screws

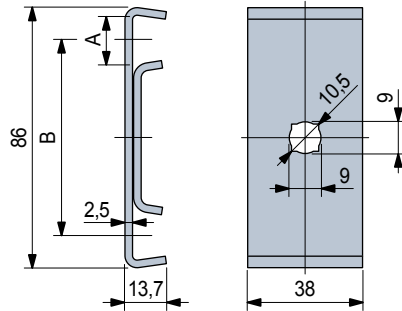


| Code | Weight kg |
|--------|--------------|
| 689222 | 0,10 |

- Material: clamp and bolt in austenitic stainless steel.
- Packaging: 16 pieces.

Part. S0217

Guide-rail clamp (double)

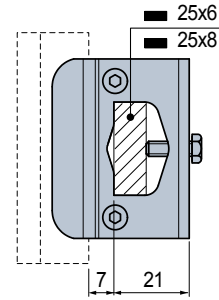


| Use | A mm | B mm | Code | Weight kg |
|------------------------|---------|---------|--------|--------------|
| For guides width S = 2 | 17 | 63,5 | 695131 | 0,14 |

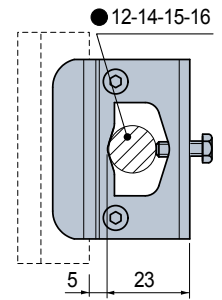
- Material: austenitic stainless steel.
- Packaging: 50 pieces.
- Accessories: swivel pin connection Part. S0740 - S0740P.

Assembly of Part. S0694

Fixing on plates

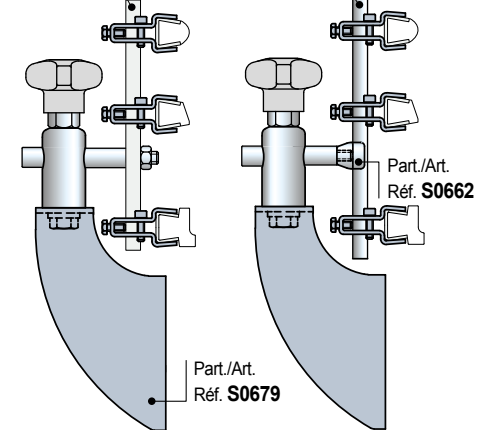


Fixing on rods

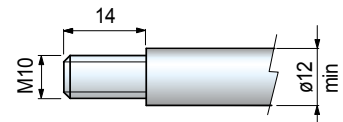


25x6
25x8

12-14-15-16

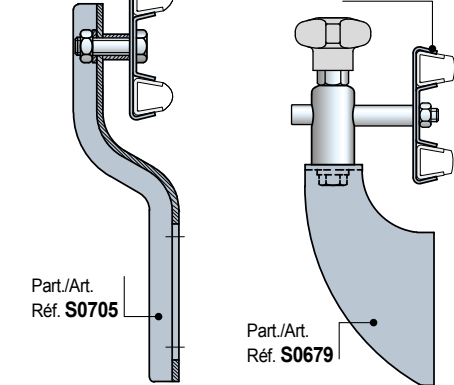


Pin dimensions for Part. S0217



Part./Art.
Réf. S0217

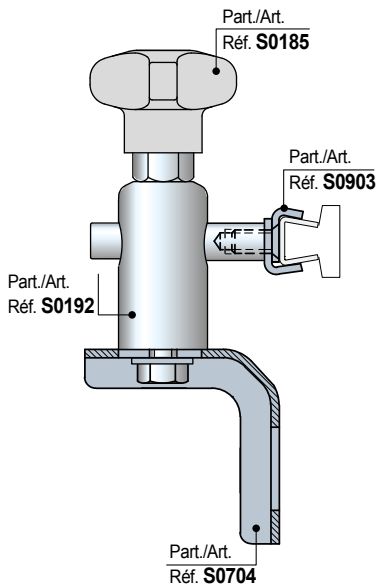
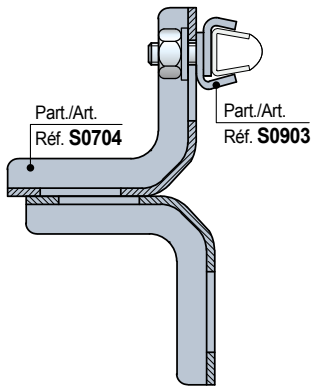
Part./Art.
Réf. S0217



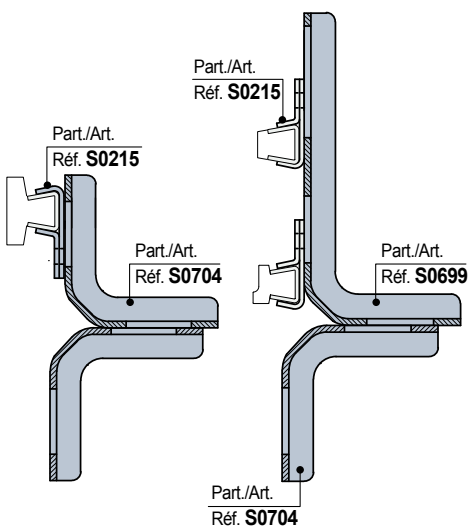
Guide - Rail Clamps

for Part. S0223 - S0317 - S0219 - S0273 - S0308 - S0715 - S0765 - S0767 - S0769 - S0770

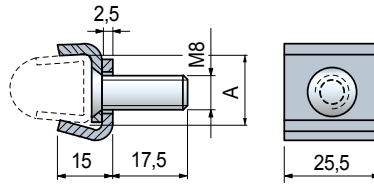
• Assembly of Part. S0903



• Assembly of Part. S0215



■ ViseClamp™



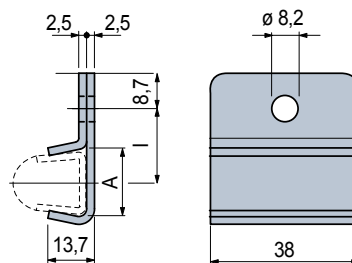
Part. **S0903**



| Use | A mm | Code |
|------------------------|---------|----------------|
| For guides width S = 2 | 17 | 656001N |

- Material: austenitic stainless steel.
- Packaging: 50 pieces.

■ Guide rail clamp



Part. **S0215**



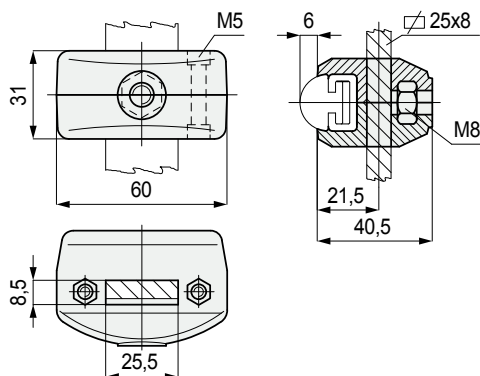
| Use | A mm | l mm | Code | Weight kg |
|--------------------------|---------|---------|---------------|--------------|
| For guides width S = 1,5 | 16 | 20,5 | 60121N | 0,04 |
| For guides width S = 2 | 17 | 20 | 65976N | |

- Material: austenitic stainless steel.
- Packaging: 50 pieces.

Part. **S0237**



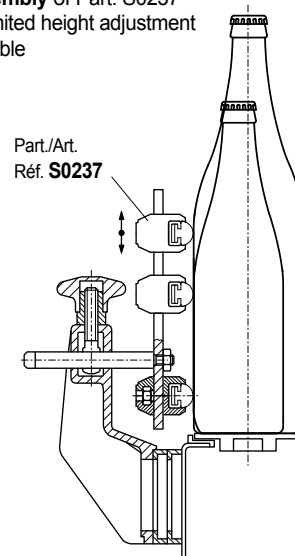
■ Adjustable guide-rail clamp



| Code | Weight kg |
|--------------|--------------|
| 63151 | 0,06 |

- Material: guide rail clamp in reinforced polyamide PA FV (black).
- Bolts in austenitic stainless steel. Nuts in nickel plated brass.
- Packaging: 24 pieces.

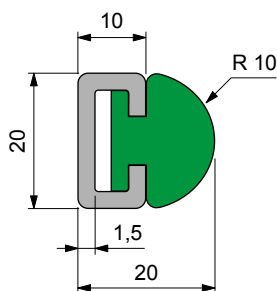
• Assembly of Part. S0237
Unlimited height adjustment possible



Part. **S0247**

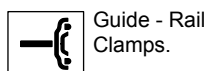


■ Guide rail (round)

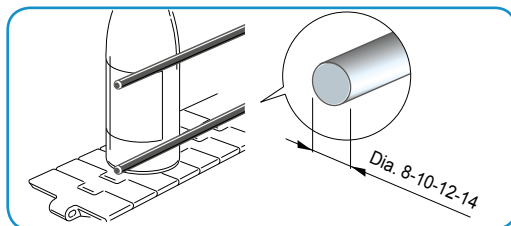


| Length metres | Metal profile material | Code | Weight kg/m |
|--|----------------------------|--------------|----------------|
| Plastic profile material in polyethylene UHMWPE (green) | | | |
| 3 | Austenitic stainless steel | 63911 | 0,67 |
| | Zinc plated steel | 63921 | |

- Min. curvature radius: 145 mm.
- Linear expansion coefficient: $2 \times 10^{-4} \text{ } ^\circ\text{C}^{-1}$.
Calculation of thermal expansion see Technical information.
- Accessories:

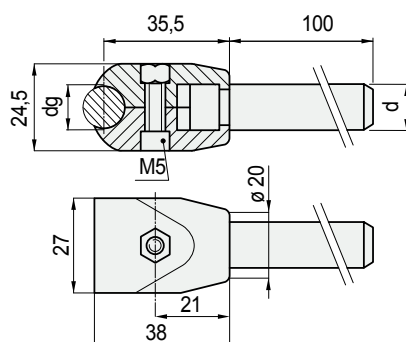


Guide - Rail Clamps for
• Round steel rods



Part. S0082P

■ Guide-rail clamp

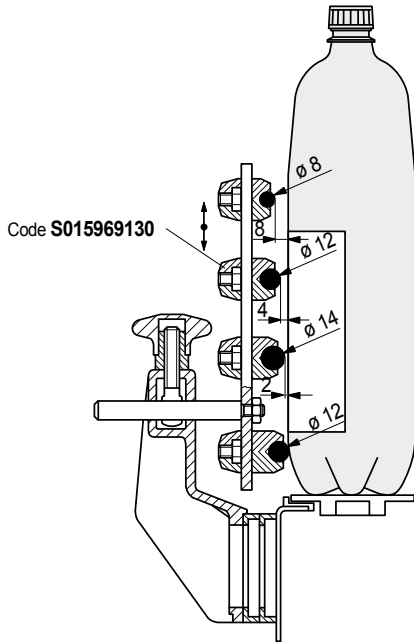


| pin dia. d mm | Guide dia. dg mm | Code | Weight kg |
|---------------------|------------------------|----------------|--------------|
| 12 | 12 | 6184910 | 0,12 |

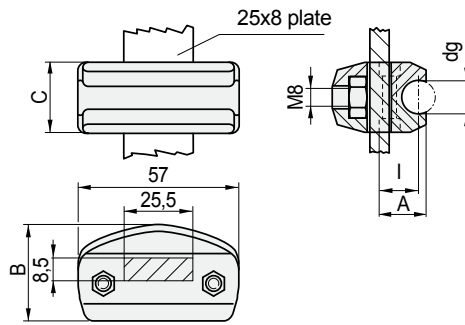
- Material: guide rail clamps in reinforced polyamide PA FV (black).
- Pin in austenitic stainless steel.
- Bolt in austenitic stainless steel. Nut in nickel plated brass.
- Packaging: 24 pieces.

for round steel Rods

- Assembly of Part. S0159
PET bottle movement
(subject to swelling).



Adjustable guide-rail clamp



Guide dia.

| dg mm | I mm | A mm | B mm | C mm | Code | Weight kg |
|----------|---------|---------|---------|---------|-------------|--------------|
| 10 | 12 | 15,8 | 32,5 | 21 | S0159622381 | 0,05 |
| 12 | 14 | 17,8 | 35 | 25 | S015969130 | |

- Material: guide rail clamp in reinforced polyamide PA FV (black).
Bolts in austenitic stainless steel. Nuts in nickel plated brass.
- Packaging: 24 pieces.

Part. S0159

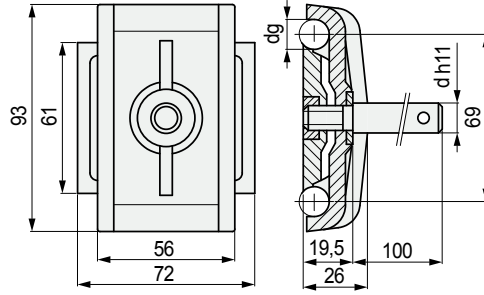


For 25 x 8 plates

for round steel Rods

Part. S0071

Double guide-rail clamp

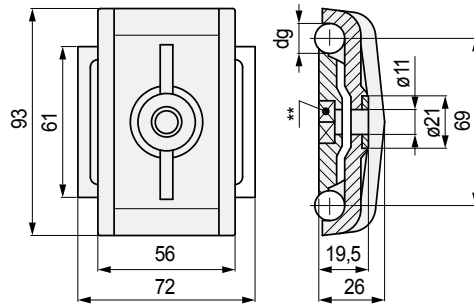


| pin dia. d mm | Guide dia. dg mm | Code | Weight kg |
|---------------------|------------------------|-------|--------------|
| 12 | 12 | 50960 | 0,20 |

- Material: guide rail clamp in reinforced polyamide PA FV (black).
- Pin in austenitic stainless steel.
- Washer in austenitic stainless steel.
- Nut in nickel plated brass.
- Packaging: 24 pieces.

Part. S0070

Double guide-rail clamp

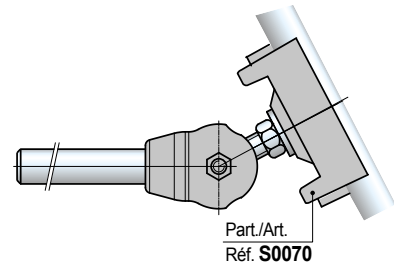


** = Seat for nut M10
UNI 5588

| Pin dia. d mm | Code | Weight kg |
|---------------------|-------|--------------|
| 12 | 50950 | 0,09 |

- Material: guide rail clamps in reinforced polyamide PA FV (black).
- Washer in austenitic stainless steel.
- State of supply: supplied without tightening nut.
- Packaging: 24 pieces.
- Accessories: swivel pin connection.

- **Swivel pin connection** Part. S0740 - S0740P
Use for conveyors with (format change).
They allow an easy regulation of product-guides on corner tracks.
See page S112.

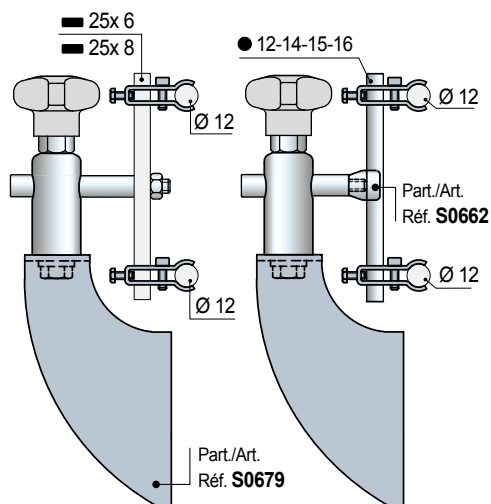
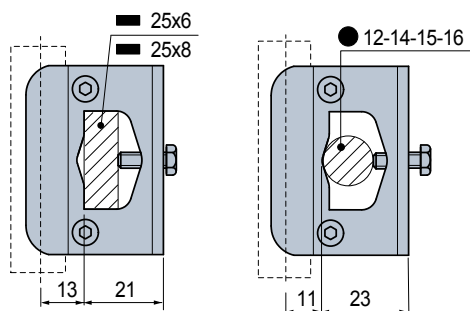


for round steel Rods

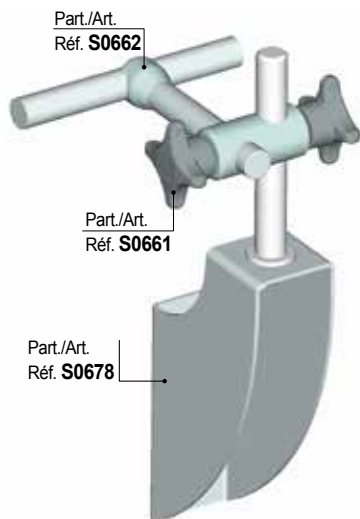
• Assembly of Part. S0698

Fixing on plates

Fixing on rods

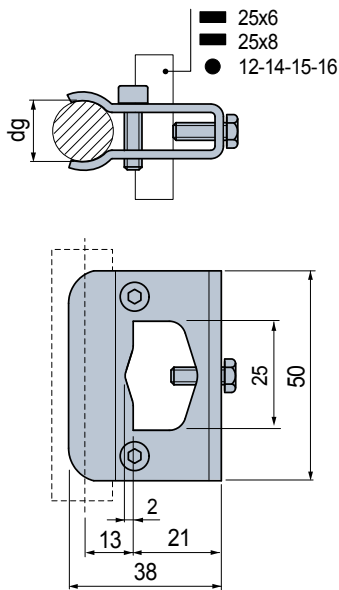


• Assembly of Part. S0662



■ Guide-rail clamp

With two fixing screws



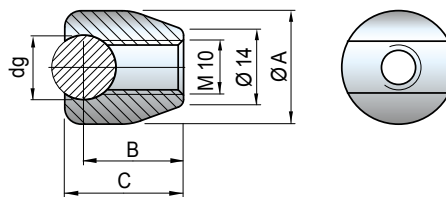
| Guide dia. d mm | Code | Weight kg |
|-----------------------|--------|--------------|
| 12 | 689202 | 0,10 |

- Material: clamp and bolt in austenitic stainless steel.
- Packaging: 16 pieces.

Part. **S0698**



■ Guide-rail clamp



| Guide dia. dg mm | Code | dia. A mm | B mm | C mm | Weight kg |
|------------------------|--------|--------------|---------|---------|--------------|
| 12 | 669552 | 21 | 18,5 | 22 | 0,03 |

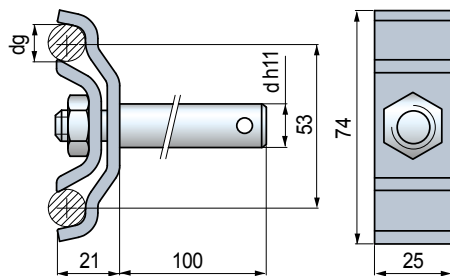
- Material: austenitic stainless steel.
- Packaging: 10 pieces.

Part. **S0662**



Part. S0050

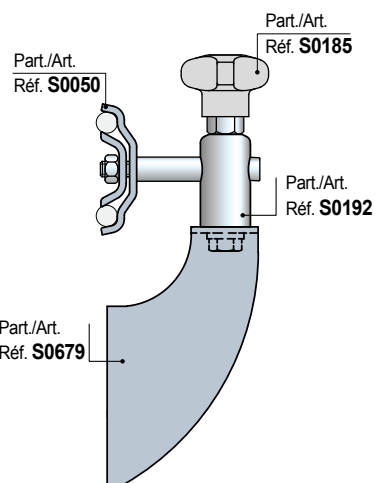
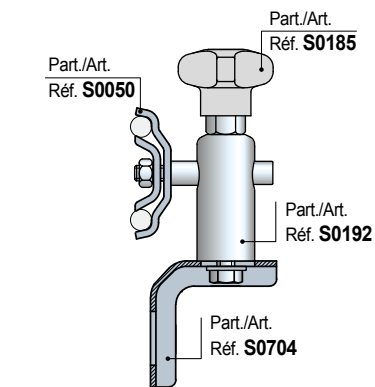
■ Double guide-rail clamp



| Guide dia. dg mm | pin dia. d mm | Code | Weight kg |
|------------------------|---------------------|-------|--------------|
| 12 | 12 | 53801 | 0,34 |
| | 14 | 51000 | 0,36 |

- Material: guide rail clamp and tightening nut in austenitic stainless steel. Pin in austenitic stainless steel.
- Packaging: 12 pieces.

• Assembly of Part. S0050



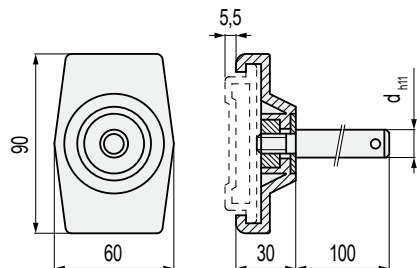
Guide - Rail Clamps for
• Part. S0191



Part. **S0190**



■ Guide-rail clamp



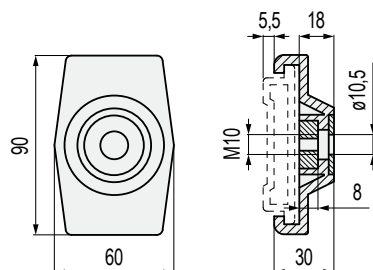
| Pin dia. d mm | Code | Weight kg |
|---------------------|-------|--------------|
| 12 | 55741 | 0,18 |

- Material: guide rail clamp in reinforced polyamide PA FV (black). Pin in austenitic stainless steel. Washer in austenitic stainless steel. Nut in nickel plated brass.
- Packaging: 24 pieces.
- Suitable to use in curves also.

Part. **S0184**



■ Guide-rail clamp

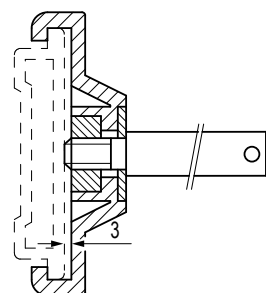


| Code | Weight kg |
|-------|--------------|
| 54961 | 0,09 |

- Material: guide rail clamp in reinforced polyamide PA FV (black). Washer in austenitic stainless steel. Nut in nickel plated brass.
- Packaging: 24 pieces.
- Suitable to use in curves also.

• Assembly of Part. S0190

The protrusion of the pin allows the guide to be locked axially.



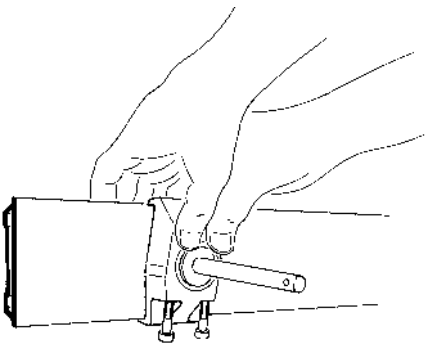
Guide - Rail Clamps for
• Part. S0296

S0296

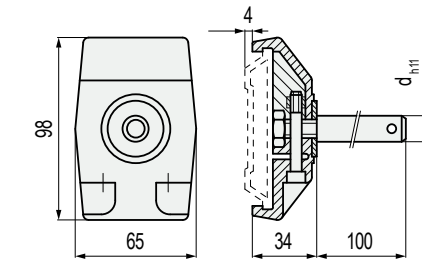


• Assembly of Part. S0298

- 1) Untighten the screws
- 2) Clip on to the profile
- 3) Slide along the guide to the desired position and tighten screws to lock in place.



■ Guide-rail clamp



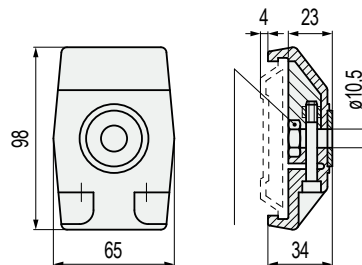
| Pin dia. d mm | Code | Weight kg |
|---------------------|-------|--------------|
| 12 | 60372 | 0,12 |

- Material: guide rail clamp in reinforced polyamide PA FV (black). Pin in austenitic stainless steel. Washer in austenitic stainless steel. Nut in nickel plated brass.
- Packaging: 24 pieces.
- Suitable to use in curves also.

Part. **S0298**



■ Guide-rail clamp



| Code | Weight kg |
|-------|--------------|
| 60362 | 0,12 |

- Material: guide rail clamp in reinforced polyamide PA FV (black). Washer in austenitic stainless steel. Nut in nickel plated brass.
- Packaging: 24 pieces.
- Suitable to use in curves also.

Part. **S0298**

