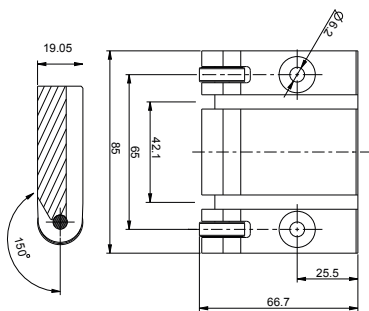
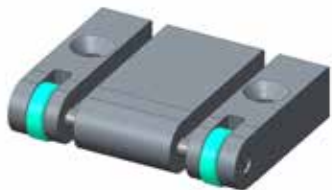


Part. S0905

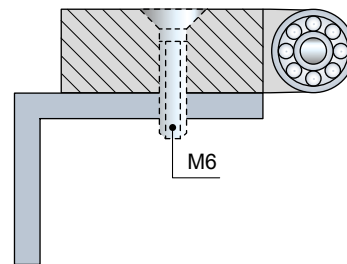
■ Dynamic "Nose - Over" bar standard profile



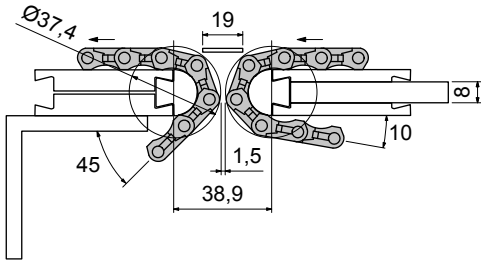
Description	Code	Weight mm
Nose Over Dyn 905 L85MM M6 PT	10603961	0,18

- Material: Polyethylene ULF 500.000 (brown red).
- Packaging: 1 pieces.

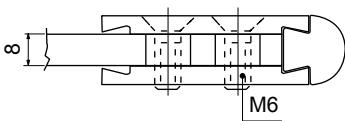
- Modular nose - over bar standard
N2 M6 socked flat head cap screws UNI 5933.



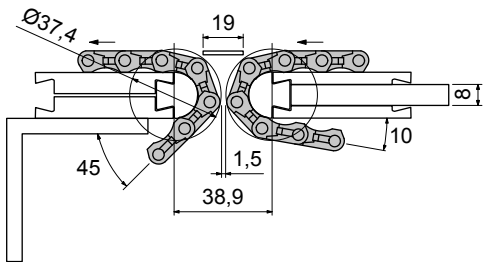
• Assembly of Part. S0905



• Assembly of "Nose - Over" bar with 8 mm plate

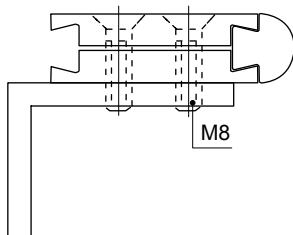


• Assembly of Part. S0905



• Modular nose - over bar standard

N4 M8 socked flat head cap screws UNI 5933.

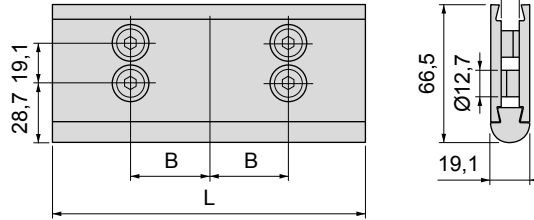


• Use of Part. S0905

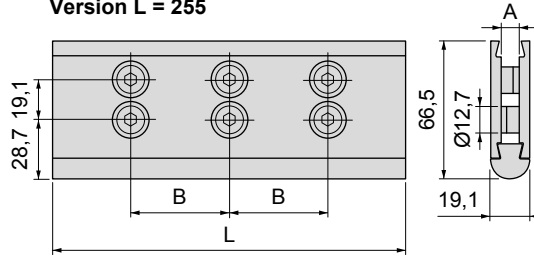
Head to tail transfer with MatTop® chain Series 1500.

■ Modular "Nose - Over" bar low profile

Version L = 152,4 e 170



Version L = 255



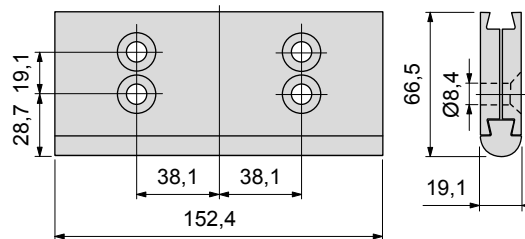
L mm	B mm	Hardware	A	Code	Weight Kg
152,4	38,1	M6	8 mm	10483148	0,18
		1/4-20	0,25 inch	10483150	
170	42,5	M6	8 mm	10476256	0,20
255	85	M6	8 mm	10476257	0,31

- Material: clamp in polyamide PA (black), sliding profile in ULF, steel hardware.
- Packaging: 1 pieces.

Part. S0905



■ Modular "Nose - Over" bar standard profile



Code	Weight mm
10483148	0,18

- Material: clamp in polyamide PA (black), sliding profile in ULF.
- Packaging: 1 pieces.

Part. S0905

