

Maintaining the highest sanitation protocols is paramount to food processors. This important practice finds itself in the ability to clean and maintain conveyor belts in any area where pathogens can live and breed. With this in mind, the 1010 Series KleanTop™ belt was created, offering a belt that is one of the easiest to clean.

Durable and Effectively Cleaned

Key features of the 1010 Series KleanTop aim to ensure your operations are food safe. Over time, edges of plastic belts wear down and pose a risk to food production. The 1010 Series KleanTop is designed to eliminate the risk of product contamination by reinforcing the edges of the belt where breakdown can occur.

Hinge areas can be difficult to see and clean. This is problematic in certain food applications which require all areas of the conveying operation to be as sanitary as possible. The Rexnord 1010 Series features a completely open hinge design, exposing 60 percent of the rod, and enabling the hinge to be completely cleaned with less time, water and chemical usage.



Conveyor equipped with Rexnord 1015 Series Series KleanTop Belt

Easy Assembly and Maintenance

Some belts have complicated rod retention designs, raising the risk for rod and/or belt damage. The 1010 Series has a simplified rod retention system enabling easy assembly and disassembly with a simple screwdriver, keeping downtime as low as possible.

Superior Industry Performance

The combination of features and benefits allows for superior performance in baking, snack, fruit and vegetable, seafood and poultry applications.

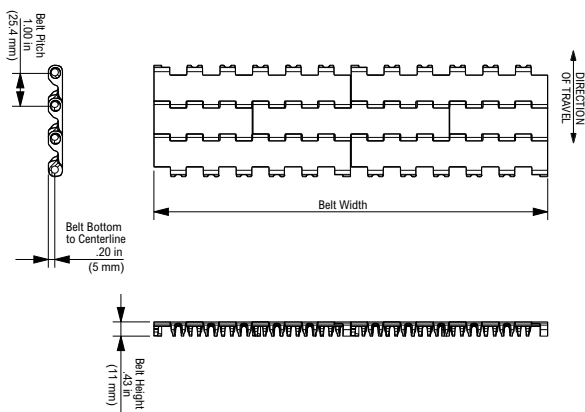
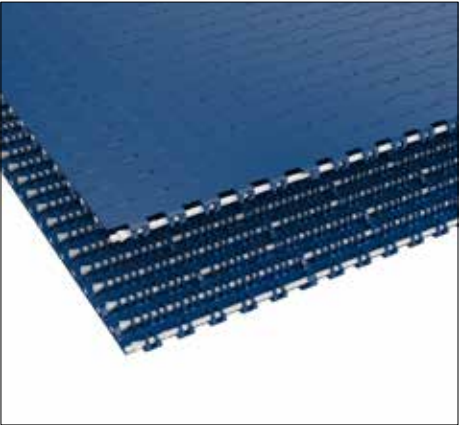
Product Information

- Plastic modular belt available in minimum width of two inches (50.8 mm) and increments of one inch (25.4 mm).
- Four surface top executions available: Nub Top, Flat Top, Perforated Flat Top and Perforated Nub Top (both with 20 percent open area).
- Cleanable machined sprockets in 10-, 12-, 16-, 18- and 20-teeth execution.
- Available in white and blue FDA approved materials for visual contrast and identification.
- Four inches (101.6 mm) high flight with non-stick ribs on both sides to reduce product sticking on incline and decline applications.
- Two inches (50.8 mm) and three inches (76.2 mm) high side guards are available.



Conveyor equipped with Rexnord 1011 Series Series KleanTop Belt

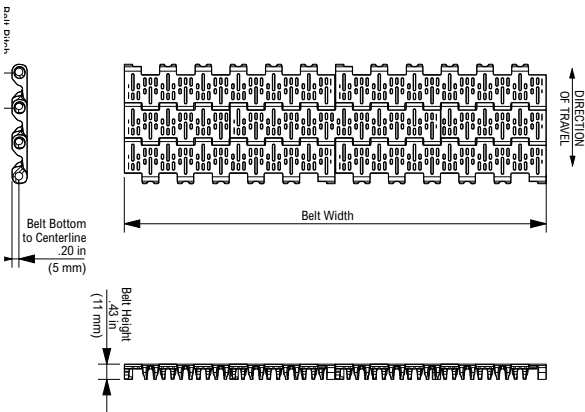
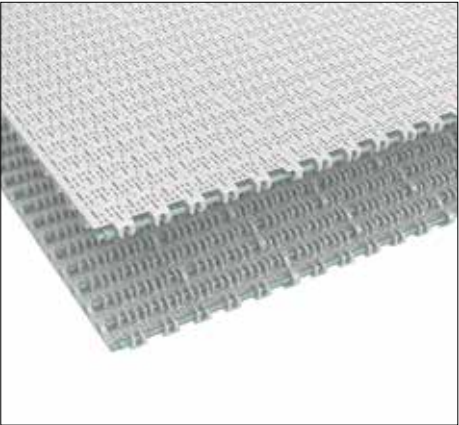
Flat Top 1015



Rexnord 1015 Series KleanTop Belt Overview

| Chain Type | Material | Standard Pin Material | Working Load (max) | Weight | Backflex Radius (min) | Temperature Range °C | |
|--------------|----------------------|-----------------------|--------------------|---------------|-----------------------|----------------------|----------|
| | | | lbs/ft / N/m | lbs/ft / kg/m | | Dry | Wet |
| 1015 FlatTop | WHT-BHT (Blue-White) | PBT | 400 / 6.000 | 0.90 / 4.39 | 1.57 / 40 | 4 / 104 | 4 / 100 |
| 1015 FlatTop | WLT-BLT (Blue-White) | PBT | 350 / 5.000 | 0.98 / 4.78 | | -73 / 27 | -73 / 27 |
| 1015 FlatTop | WSM (White) | PBT | 800 / 12.000 | 1.44 / 7.03 | | -40 / 82 | -40 / 66 |

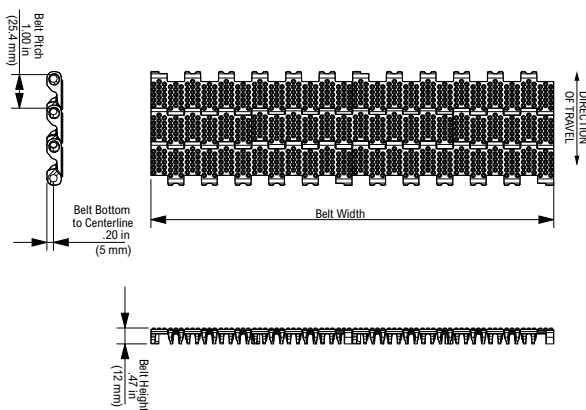
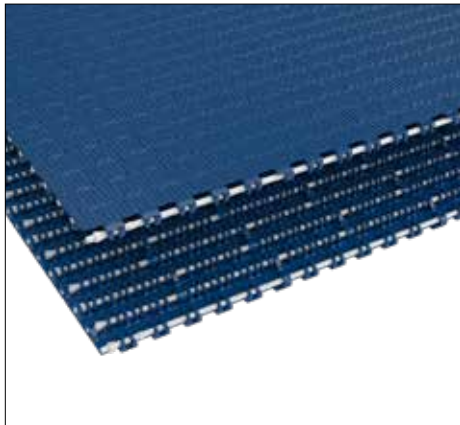
Perforated FlatTop 1016



Rexnord 1016 Series KleanTop Belt Overview

| Chain Type | Material | Standard Pin Material | Working Load (max) | Weight | Backflex Radius (min) | Temperature Range °C | |
|-------------------------|----------------------|-----------------------|--------------------|---------------|-----------------------|----------------------|----------|
| | | | lbs/ft / N/m | lbs/ft / kg/m | | Dry | Wet |
| 1016 Perforated FlatTop | WHT-BHT (Blue-White) | PBT | 400 / 6.000 | 0.90 / 4.39 | 1.57 / 40 | 4 / 104 | 4 / 100 |
| 1016 Perforated FlatTop | WLT-BLT (Blue-White) | PBT | 350 / 5.000 | 0.98 / 4.78 | | -73 / 27 | -73 / 27 |
| 1016 Perforated FlatTop | WSM (White) | PBT | 800 / 12.000 | 1.44 / 7.03 | | -40 / 82 | -40 / 66 |

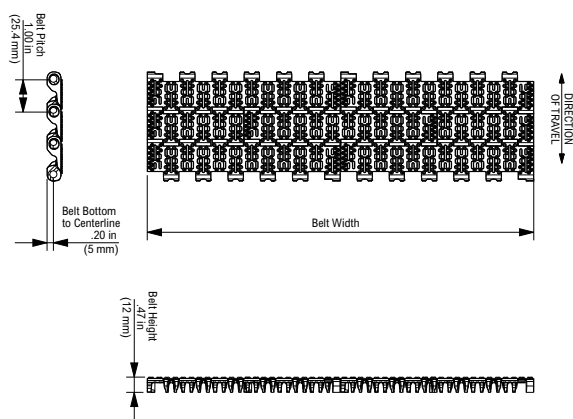
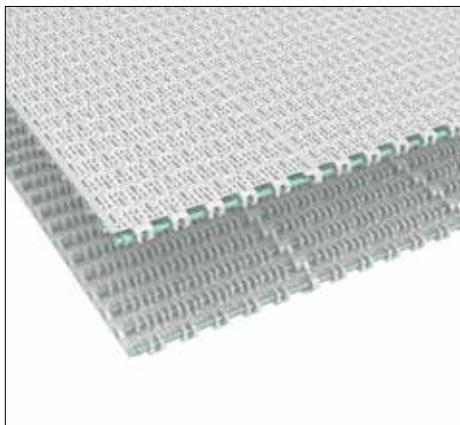
Nub Top 1011



Rexnord 1011 Series KleanTop Belt Overview

| Chain Type | Material | Standard Pin Material | Working Load (max) | Weight | Backflex Radius (min) | Temperature Range °C | |
|--------------|----------------------|-----------------------|--------------------|---------------|-----------------------|----------------------|----------|
| | | | lbs/ft / N/m | lbs/ft / kg/m | | Dry | Wet |
| 1011 Nub Top | WHT-BHT (Blue-White) | PBT | 400 / 6.000 | 0.90 / 4.39 | 1.57 / 40 | 4 / 104 | 4 / 100 |
| 1011 Nub Top | WLT-BLT (Blue-White) | PBT | 350 / 5.000 | 0.98 / 4.78 | | -73 / 27 | -73 / 27 |
| 1011 Nub Top | WSM (White) | PBT | 800 / 12.000 | 1.44 / 7.03 | | -40 / 82 | -40 / 66 |

Perforated Nub Top 1018



Rexnord 1018 Series KleanTop Belt Overview

| Chain Type | Material | Standard Pin Material | Working Load (max) | Weight | Backflex Radius (min) | Temperature Range °C | |
|-------------------------|----------------------|-----------------------|--------------------|---------------|-----------------------|----------------------|----------|
| | | | lbs/ft / N/m | lbs/ft / kg/m | | Dry | Wet |
| 1018 Perforated Nub Top | WHT-BHT (Blue-White) | PBT | 400 / 6.000 | 0.90 / 4.39 | 1.57 / 40 | 4 / 104 | 4 / 100 |
| 1018 Perforated Nub Top | WLT-BLT (Blue-White) | PBT | 350 / 5.000 | 0.98 / 4.78 | | -73 / 27 | -73 / 27 |
| 1018 Perforated Nub Top | WSM (White) | PBT | 800 / 12.000 | 1.44 / 7.03 | | -40 / 82 | -40 / 66 |



**Rexnord 1010 Series
KleanTop Belt
Bi-directional Drive
Sprocket KU1010**

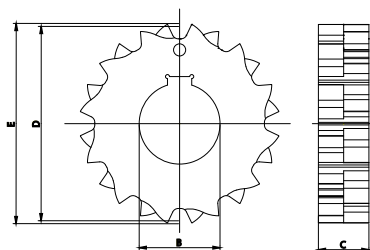


**Rexnord 1010 Series
KleanTop Belt
Uni-directional
Sprocket KU1010**

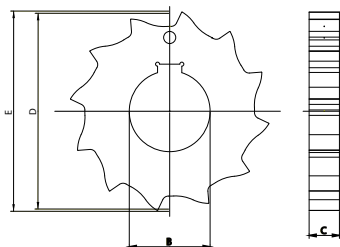


**Rexnord 1010 Series
KleanTop Belt
Idler
Sprocket KU1010**

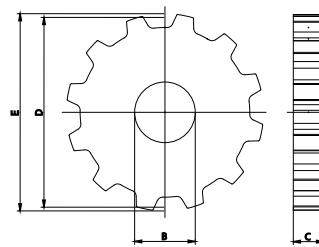
| Sprocket Type | Code Number | Number of Teeth | Shaft Size B | Width C | Pitch Diameter D | Outside Diameter E |
|---|-------------|-----------------|--------------|-----------|------------------|--------------------|
| | | | in / mm | in / mm | in / mm | in / mm |
| Rexnord 1010 Series Bi-directional Drive | | | | | | |
| KU1010-10T_40MM_S_UH | 10362465 | 10 | 1.57 / 40 | 0.98 / 25 | 3.24 / 82.19 | 3.26 / 82.7 |
| KU1010-12T_40MM_S_UH | 10332056 | 12 | 1.57 / 40 | 0.98 / 25 | 3.86 / 98.09 | 3.89 / 98.9 |
| Rexnord 1010 Series Uni-directional Drive | | | | | | |
| KU1010STR-10T_40MM_S_UH | 10674758 | 10 | 1.57 / 40 | 0.59 / 15 | 3.24 / 82.19 | 3.26 / 82.7 |
| KU1010STR-12T_40MM_S_UH | 10674760 | 12 | 1.57 / 40 | 0.59 / 15 | 3.86 / 98.09 | 3.89 / 98.9 |
| Rexnord 1010 Series Idler | | | | | | |
| KU1010STR-10T_30MM_I_UH | 10685630 | 10 | 1.18 / 30 | 0.59 / 15 | 3.24 / 82.19 | 3.26 / 82.7 |
| KU1010STR-12T_30MM_I_UH | 10685632 | 12 | 1.18 / 30 | 0.59 / 15 | 3.86 / 98.09 | 3.89 / 98.9 |



**Rexnord 1010 Series KleanTop Belt
Bi-directional Drive
Sprocket KU1010**



**Rexnord 1010 Series KleanTop Belt
Uni-directional
Sprocket KU1010**



**Rexnord 1010 Series KleanTop Belt
Idler
Sprocket KU1010**



**Rexnord 1010 Series
KleanTop Belt Sideguard**



**Rexnord 1010 Series
KleanTop Belt Ribbed Flight
six inches (152.4 mm)
width, four inches
(101.6 mm) height,
one-inch (25.4 mm)
side indent**



**Rexnord 1010 Series
KleanTop Belt Ribbed Flight
six inches (152.4 mm),
four inches (101.6 mm)
height**