

The 5930-Series  $\frac{3}{4}$ -inch pitch belt is intended for light to medium loads in can manufacturing, can handling and food industry applications. The belts ensure a smooth operation. 5930-Series is available in a closed and an open execution. As a standard the belts are supplied in polypropylene and acetal.

## Features

- The 19.05 mm pitch reduces chordal action.
- The small pitch permits the use of short transfer plates.
- Smooth edges and closed hinges ensure perfect product handling.
- Pin retention by means of one plugged end module and one blind end module.
- 5930-Series belts with flights, sideguards and hold-down tabs have been replaced by 8500-series; this series is identical in pitch, thickness and standard widths.

Programme	
5935 Solid Top	Closed surface; suitable for PET containers and otherwise lightweight products
5936 Perforated Top	16% Open area for optimum water- and airflow; suitable for amongst others can making and can processing
5935 Vacuum Top	Solid Top execution with small holes for amongst others vacuum conveyors in can manufacturing lines

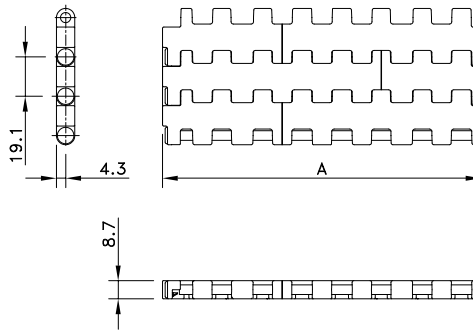
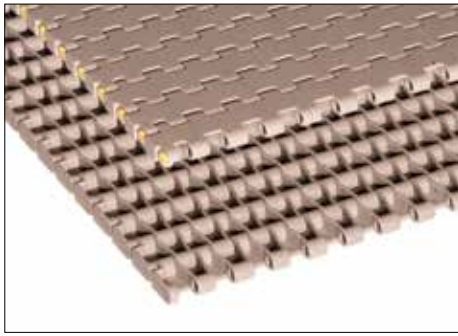


Can washer equipped with 5936 Series Chain



Empty cans on a 5935 Vacuum chain

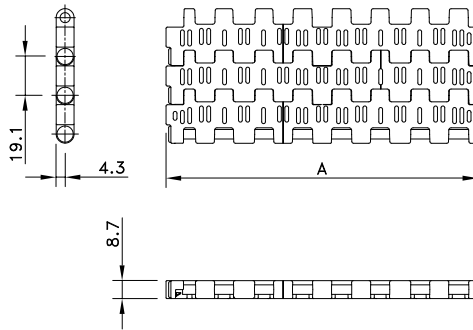
## Solid Top 5935



Assembly	Belt Type	Code Number*	Temperature range °C		Working Load (max.) N/m (21°C)	Weight kg/m <sup>2</sup>	Backflex Radius (min.) mm
			Dry	Wet			
<b>HP-Acetal With Polyester Pins</b>							
Standard	HP 5935	I5935HPKxx	-40 to +80	-40 to +65	13000	6.35	25
Standard	HP 5935 K24		-40 to +80	-40 to +65	13000	6.35	25
Standard	HP 5935 K48		-40 to +80	-40 to +65	13000	6.35	25
Standard	HP 5935 K96		-40 to +80	-40 to +65	13000	6.35	25
<b>LF-Acetal with Polypropylene Pins</b>							
Standard	LF 5935	I5935LFKxx	+4 to +80	-40 to +65	13000	6.35	25
<b>HT-POLYPROPYLENE WITH POLYPROPYLENE PINS</b>							
Standard	HT 5935	I5935HTKxx	+4 to +104	+4 to +104	7000	4.92	25
<b>FRPLUS - HIGH PERFORMANCE FLAME RETARDANT POLYMER WITH ACETAL PINS</b>							
Standard	FRPLUS 5935	I5935FRPLUS	-18 to +82	-18 to +60	7000	6.99	25

\* In code numbers xx corresponds with the belt width (A). Standard widths of these belts begin at 9" with 3" increments up to 120"; special widths begin at 3" with ¼" increments.

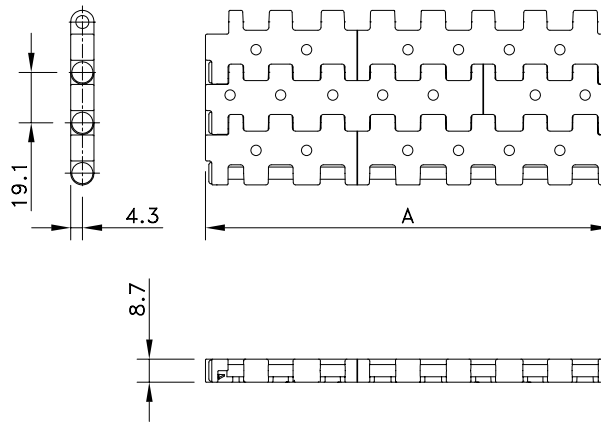
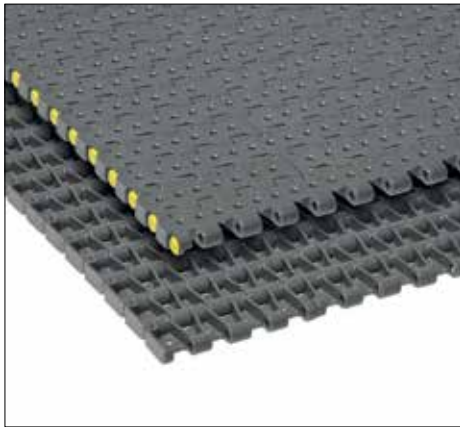
## Perforated Top 5936



Assembly	Belt Type	Code Number*	Temperature range °C		Working Load (max.) N/m (21°C)	Weight kg/m <sup>2</sup>	Backflex Radius (min.) mm
			Dry	Wet			
<b>HP-Acetal With Polyester Pins</b>							
Standard	HP 5936	I5936HPKxx	-40 to +80	-40 to +65	13000	5.90	25
Standard	HP 5936 K24	I5936HP653743	-40 to +80	-40 to +65	13000	5.90	25
Standard	HP 5936 K48	I5936HP653753	-40 to +80	-40 to +65	13000	5.90	25
Standard	HP 5936 K96	I5936HP653763	-40 to +80	-40 to +65	13000	5.90	25
<b>LF-Acetal with Polypropylene Pins</b>							
Standard	LF 5936	I5936LFKxx	+4 to +80	+4 to +65	13000	5.90	25
<b>HT-Polypropylene With Polypropylene Pins</b>							
Standard	HT 5936	I5936HTKxx	+4 to +104	+4 to +104	7000	4.49	25

\* In code numbers xx corresponds with the belt width (A). Standard widths of these belts begin at 9" with 3" increments up to 120"; special widths begin at 3" with ¼" increments. See also page 211.

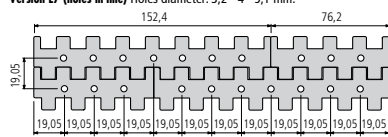
# Vacuum Top 5935



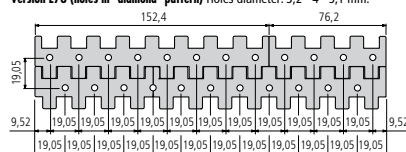
Assembly	Belt Type	Temperature range °C		Working Load (max.) N/m (21°C)	Weight kg/m <sup>2</sup>	Backflex Radius (min.) mm
		Dry	Wet			
<b>HP-Acetal with Polypropylene Pins</b>						
Standard	HP 5935 V	-40 to +80	-40 to +65	13000	6.35	25
<b>LF-Acetal with Polypropylene Pins</b>						
Standard	LF 5935 V	-40 to +80	-40 to +65	13000	6.35	25
<b>HT-Polypropylene with Polypropylene Pins</b>						
Standard	HT 5935 V	5 to 105	5 to 105	7000	4.92	25
<b>FRPLUS - High performance flame retardant polymer - Acetal Pins</b>						
Standard	FRPLUS 5935 V	-18 to +82	-18 to +60	7000	6.93	25

As the patterns of the holes will be made to order, these belts will be supplied upon request.

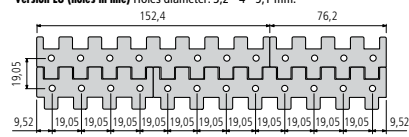
**Version E7 (holes in line)** Holes diameter: 3,2 - 4 - 5,1 mm.



**Version E78 (holes in "diamond" pattern)** Holes diameter: 3,2 - 4 - 5,1 mm.



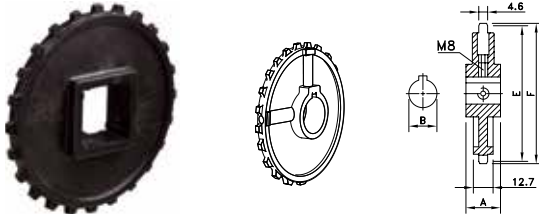
**Version E8 (holes in line)** Holes diameter: 3,2 - 4 - 5,1 mm.



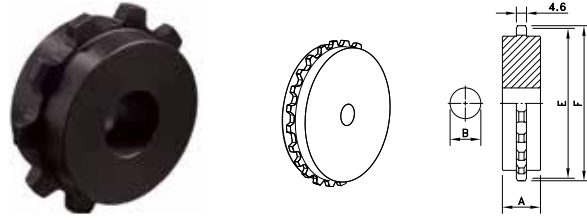
Hole Diameter		Hole Spacing		Holes per Module	Open Area
in	mm	in	mm		
1/8	3.18	3/8	9.53	15	6.2%
1/8	3.18	3/4	19.05	8	4.3%
9/64	3.57	3/4	19.05	8	4.9%
9/64	3.57	3/8	9.53	15	7.3%
5/32	3.97	3/4	19.05	8	5.5%
3/16	4.76	3/4	19.05	8	7.0%
7/32	5.56	3/4	19.05	8	8.8%
1/4	6.35	3/4	19.05	8	10.8%

Standard hole sizes listed per 6 in (152.4 mm) module. All vacuum holes are centered on the chain.

## Classic Sprockets Moulded



## Classic Sprockets Machined

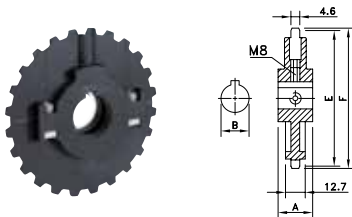


Sprocket Type	Code Number	Number of Teeth	Bore	Pitch Diameter	Outside Diameter	Hub Width
			B	E	F	A
			mm	mm	mm	mm

### Classic Sprockets Injection Moulded

Round Bores						
Sprocket Type	Code Number	Number of Teeth	Bore	Pitch Diameter	Outside Diameter	Hub Width
N5936-10T_25MM_1KW2SS_POM	10028485	10	25	62.2	63.5	25
N5936-24T_25MM_1KW2SS_POM	10028491	24	25	147.3	149.2	
N5936-24T_30MM_1KW2SS_POM	10028492	24	30			
N5936-24T_35MM_1KW2SS_POM	10333740	24	35			
N5936-24T_40MM_1KW2SS_POM	10028493	24	40			
Square Bores						
N5936-24T_40MM_S_POM	10013547	24	40	147.3	149.2	25
N5936-24T_50MM_S_POM	10013549	24	50			
N5936-24T_65MM_S_POM	10013551	24	65			
N5936-25T_40MM_S_POM	10027394	25	40	153.4	156.2	25
N5936-25T_65MM_S_POM	10027396	25	65			

## Split Sprockets Moulded



Sprocket Type	Code Number	Number of Teeth	Bore	Pitch Diameter	Outside Diameter	Hub Width
			B	E	F	A
			mm	mm	mm	mm

### Split Sprockets Injection Moulded

Round Bores						
Sprocket Type	Code Number	Number of Teeth	Bore	Pitch Diameter	Outside Diameter	Hub Width
NS5936-24T_25MM_1KW_PA	10334028	24	25	147.3	149.2	25
NS5936-24T_30MM_1KW_PA	10334029	24	30			
NS5936-24T_35MM_1KW_PA	10334030	24	35			
NS5936-24T_40MM_1KW_PA	10202084	24	40			
Square Bores						
NS5936-24T_40MM_S_PA	10333806	24	40	147.3	149.2	25